

Lenovo Legion 5 15IMH05H 81Y6003QMH

Product

Lenovo Legion 5 15IMH05H

Region

WE

Country/Region

Netherlands

Machine Type

81Y6

Processor

Intel Core i7-10750H (6C / 12T, 2.6 / 5.0GHz, 12MB)

Graphics

NVIDIA GeForce RTX 2060 6GB GDDR6

Chipset

Intel HM470

Memory

2x 8GB SO-DIMM DDR4-2933

Storage

256GB SSD M.2 2280 PCIe NVMe + 1TB HDD 5400rpm 2.5"

Display

15.6" FHD (1920x1080) IPS 250nits Anti-glare, 120Hz, 45% Gamut

Touchscreen

None

Optical

None

Media Reader

None

Ethernet

100/1000M

WLAN + Bluetooth

11ax, 2x2 + BT5.0

Bundled Accessories

None

Case Material

PC / ABS

Camera

720p

Microphone

2x, Array

Color

Phantom Black

Keyboard

Backlit, English (EU)

Fingerprint Reader

None

TPM

FW TPM 2.0

Battery

Integrated 60Wh

Power Adapter

230W Slim Tip

Operating System

Windows 10 Home 64, Benelux (EN/FR/DE/NL)

Bundled Software

Office Trial

Base Warranty

2-year, Depot

Bundled Service

None

EAN / UPC / JAN

194778934121

End of Support

2026-05-27

Announce Date

2020-04-15

 WWW.LENOVO.COM

Lenovo may not offer the products, services or features discussed in this document in other countries. Lenovo may withdraw an offering at any time. Information is subject to change without notice. Consult your local representative for information on offerings available in your area.

Lenovo reserves the right to change specifications or other product information without notice. Lenovo is not responsible for photographic or typographical errors.

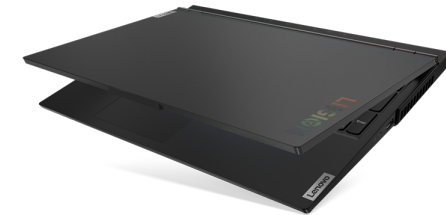
Lenovo provides this publication "as is" without warranty of any kind, either express or implied, including the implied warranties of merchantability or fitness for a particular purpose.



<https://psref.lenovo.com>

Visit psref website for the latest version of Product Specifications Reference.

© Lenovo, 2020. All rights reserved.



Lenovo™

Lenovo Legion 5 15IMH05H Platform Specifications

Product Specifications Reference (PSREF)



Processor	10th Generation Intel® Core™ i5 / i7 Processor								Media reader Ports None Four USB 3.1 Gen 1 (one Always On), one USB 3.1 Type-C Gen 1 (with the function of DisplayPort 1.2), HDMI 2.0, Ethernet (RJ-45), headphone / microphone combo jack, security keyhole, AC power adapter jack <i>* Depending on many factors, actual data transfer speed may be lower than theoretical speed</i> Optional: Lenovo Legion M300 RGB Gaming Mouse (USB connector)
	Processor Number	# of Cores	# of Threads	Base Frequency	Max Turbo Frequency	Cache	Memory Types	Processor Graphics	
	i5-10300H	4	8	2.5 GHz	4.5 GHz	8MB	DDR4-2933	Intel UHD Graphics	
	i7-10750H	6	12	2.6 GHz	5.0 GHz	12MB			
i7-10875H	8	16	2.3 GHz	5.1 GHz	16MB				
Graphics	Integrated Graphics		Discrete Graphics (Memory)						Camera 720p HD, 1.0MP resolution, privacy shutter, fixed focus, integrated dual array microphone
	Intel UHD Graphics		NVIDIA® GeForce® GTX 1660 Ti (6GB GDDR6 memory), VR ready NVIDIA GeForce RTX 2060 (6GB GDDR6 memory), VR ready						
supports external digital monitor via HDMI or USB Type-C; supports three independent displays; Max resolution: 4096x2160@60Hz (HDMI); 3840x2160@30Hz (USB Type-C)									
Chipset	Intel HM470 Chipset								Security Power-on password, hard-disk password, supervisor password, security keyhole Security chip Firmware TPM 2.0 integrated in chipset Fingerprint reader None
Memory	16GB max offering / 2933MHz DDR4, dual-channel capable, two DDR4 SO-DIMM sockets								
Display	<i>One of the following, configurable by model:</i>								Battery Integrated Li-Polymer 60Wh or 80Wh battery, supports Rapid Charge Pro (30 minutes 50%) Max battery life <i>MobileMark® 2018: 7.7 hr (80Wh) or 6.8 hr (60Wh)</i> <i>* Battery life varies significantly with hardware configurations, settings, usage, & other factors</i>
	<ul style="list-style-type: none"> 15.6" (396mm) FHD (1920x1080), anti-glare, LED backlight, IPS, 250 nits, 16:9 aspect ratio, 45% NTSC gamut, refresh rate 120Hz 15.6" (396mm) FHD (1920x1080), anti-glare, LED backlight, IPS, 300 nits, 16:9 aspect ratio, 100% sRGB gamut, refresh rate 60Hz 15.6" (396mm) FHD (1920x1080), anti-glare, LED backlight, IPS, 300 nits, 16:9 aspect ratio, 100% sRGB gamut, refresh rate 144Hz, Dolby® Vision 15.6" (396mm) FHD (1920x1080), anti-glare, LED backlight, IPS, 500 nits, 16:9 aspect ratio, 100% sRGB gamut, refresh rate 240Hz, Dolby Vision 								
Multi-touch	None								AC adapter 230W slim tip AC adapter Preload (optional) <i>Preloaded operating system</i> <ul style="list-style-type: none"> Windows® 10 Home 64 Windows 10 Pro 64 <i>Preloaded applications (only some listed)</i> <ul style="list-style-type: none"> Microsoft Office Trial (with 30-day license) Microsoft Office Home and Business 2019 Microsoft Office Home and Student 2019 Microsoft 365 Family Microsoft 365 Personal Microsoft Office Professional 2019 Microsoft Office Personal 2019
Storage	<i>Up to 2 drives:</i> <ul style="list-style-type: none"> HDD / SATA 6.0Gb/s, 2.5" wide, 7mm high M.2 2280 SSD / PCIe NVMe, PCIe 3.0 x 4 M.2 2242 SSD / PCIe NVMe, PCIe 3.0 x 4 								
Optical	None								Limited warranty <i>One of the following, configurable by model:</i> <ul style="list-style-type: none"> 1-year depot repair service 1-year depot repair with 2-year system board repair service 2-year/1-yr battery depot repair service
Ethernet	Gigabit Ethernet connection								
WLAN	802.11ax 2x2 Wi-Fi + Bluetooth 5.0, M.2 Card								Environment ErP lot3; RoHS-compliant
Bluetooth™	Bluetooth 5.0 wireless, integrated in Wi-Fi + Bluetooth combo adapter								
Dimensions	<i>WxDxH:</i> 14.3" x 10.22" x 0.93-1.03"; 363.06mm x 259.61mm x 23.57-26.1mm								
Weight	Starting at 5.42 lb / 2.46 kg								
Case color	Phantom black								
Case material	PC/ABS plastic								
Lighting	Legion "Y" logo with white backlit on display cover								

Note: The specifications above may not be available in all regions.

Lenovo
June 2020

Lenovo Legion 5 15IMH05H

